

# Staying Connected with the VILLAGE OF PEWAUKEE

Waukesha County recycling and solid waste program data for 2022

## Recycling



The recycling program is offered to all participating municipalities.

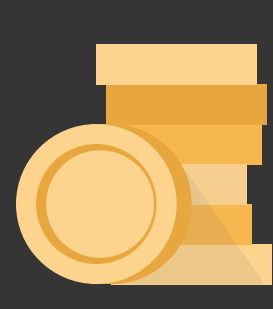
### VILLAGE OF PEWAUKEE COSTS COVERED BY WAUKESHA COUNTY



490  
Total Recycling Tons

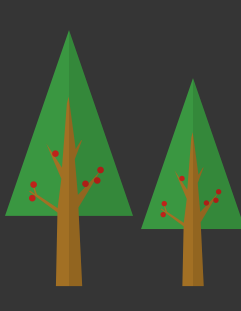


\$25,415  
Total Processing Costs

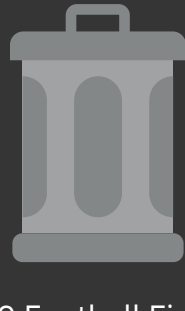


\$4,637  
Total Contamination Disposal Costs

### ENVIRONMENTAL AND MONETARY SAVINGS



4,594  
Trees Saved in the Village



3.49 Football Fields (10 feet deep) of Landfill Space Saved in Waukesha County



\$39,167  
Landfill Costs Saved in the Village

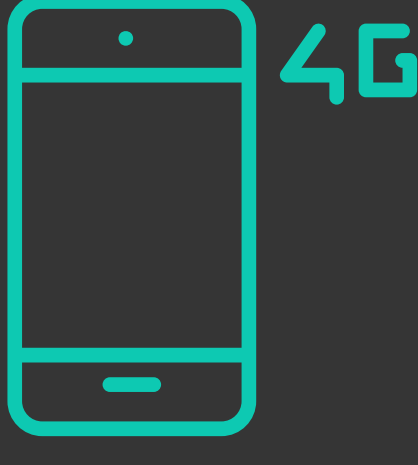
## Residential Phone Calls

Village of Pewaukee residents called Waukesha County a total of 19 times.

Majority of the calls were regarding:

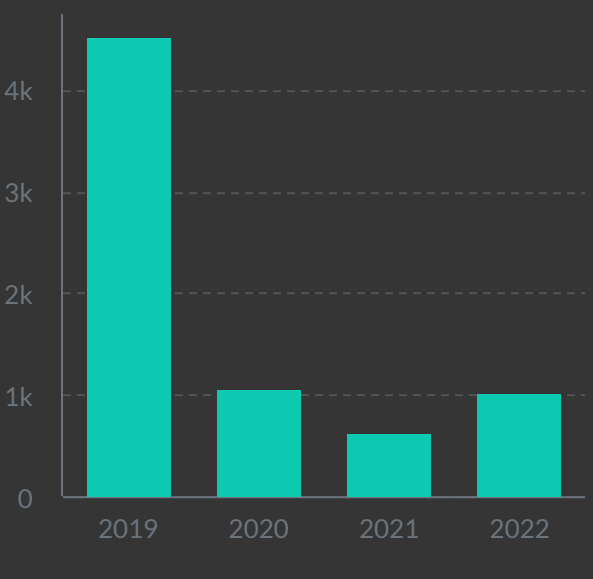
- Disposal of HHW items
- Disposal of appliances

Residents also had a lot of questions on disposal of E-Waste items.



## Programming

Programming is offered to Opt-In Communities.

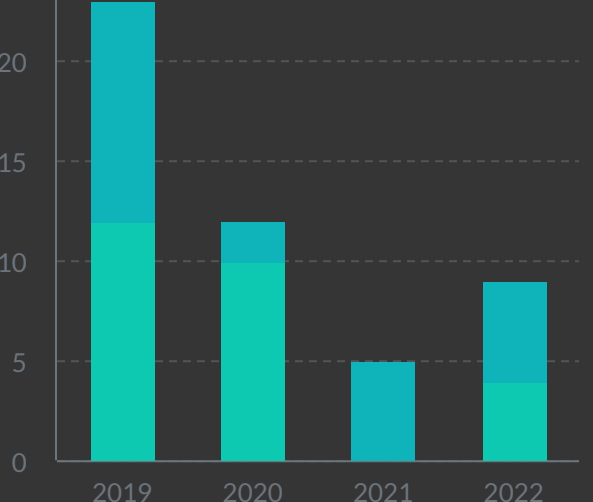


20 programs were presented to Waukesha County residents in 2022

1,023 total residents were reached with our programming in 2022

## Outreach

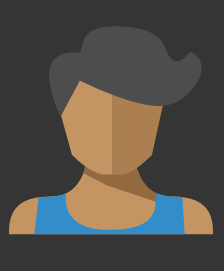
Outreach displays and attendance at events are offered to Opt-In Communities.



6,500 residents of Waukesha County reached at 5 in-person outreach events in 2022

## HHW

The Household Hazardous Waste program is open to all residents of Waukesha County because of a cost-share IGA with each municipality.



4,156  
Total Participants



\$69  
True Participant Cost/Household



\$29  
Shared Cost/Household (after Grants & Landfill payments applied)



Grants and Landfill Funds offset program costs



County and Municipality cost-share program costs 66.5%/33.5%

## Thank You!

We look forward to another great year working with you in 2023.

Check out our Municipal Webpage! It was designed with you in mind. Here you will find all sorts of information you may need in our interactions.

[www.waukeshacounty.gov/municipal](http://www.waukeshacounty.gov/municipal)

\*All cost and tonnage data is tentative and pending final audit. Final invoices may reflect a slight change.

